



Saint Gobain Group - glass mixed powders pneumatic conveying



Rialti - plastic granules pneumatic conveying



Hera Group - ashes pneumatic conveying

Bart: code 200/01/11

Bart ht: code 201/01/11

**Available from**  
**Filquip Pty Ltd**

5/126 Compton Rd  
Underwood Qld 4119  
Australia

Phone: +61 7 3208 3499

Fax: +61 7 3208 3449

Email: [sales@filquip.com.au](mailto:sales@filquip.com.au)

[www.filquip.com.au](http://www.filquip.com.au)

**AIR-TEC**  
SYSTEM

Innovative solutions for  
bulk materials handling

**BART**



Also available for  
high temperatures

*Cutting edge technology for dense phase pneumatic  
transport at an economic price*

**Versatile**

**Small dimensions**

**Easy to install**

**Quiet**



Bart is a **small** dimension vessel. It is **quiet** and suitable for distances up to 20 meters (55 feet), with a capacity of 1 ton/hr and a pressure capacity up to 2 bar.

Bart is able to transport fragile dust or materials that tend to agglomerate. It is particularly suitable for humid environments and the food, chemical or pharmaceutical industries.

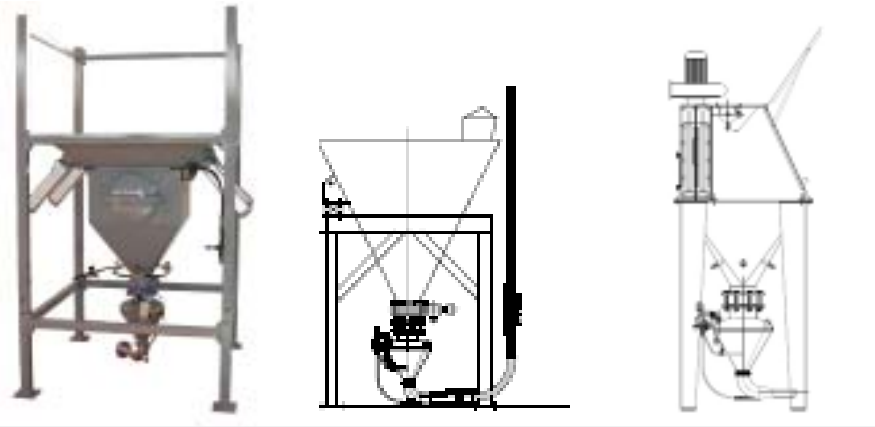
The Bart capacity is 24 litres, with a 150mm diameter loading mouth and an outlet of 1.5", 2" or 3" diameter.

Bart is available in mild steel, AISI304 and AISI316, for high temperatures (up to 200° C) and for ATEX21 and ATEX22 settings.

### How the system works

Air-Tec System's technology allows the movement of powder and granules inside a pipeline. The system is completely closed with few moving parts and it distinguishes itself by good internal cleaning and reduced maintenance costs.

Bart transporters can be applied to the conventional method of transport. The conveyance line is emptied after each loading. The **low velocity** preserves the quality of the transported material but also the condition of the pipeline. The system uses a **reduced quantity of air** with a resulting energy saving.



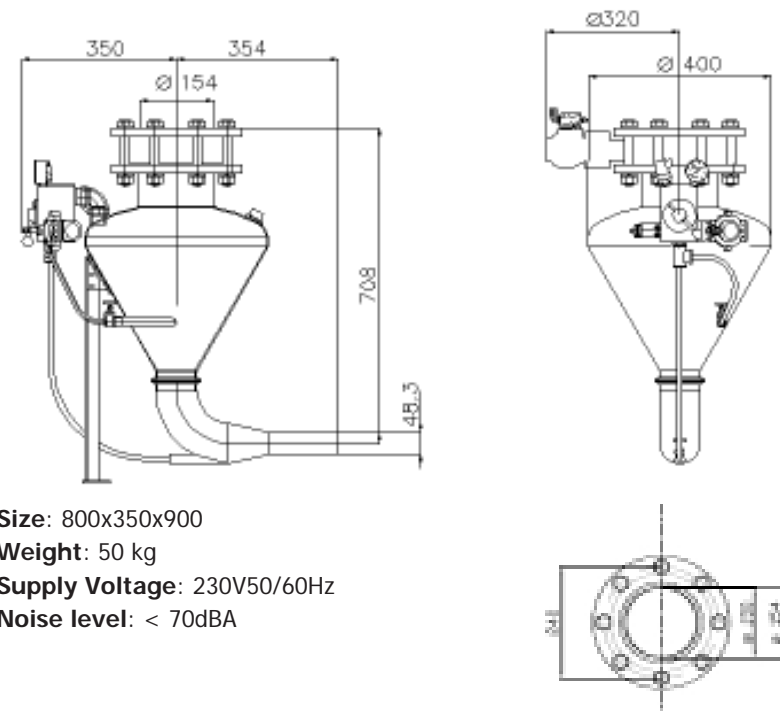
Bart under a big bag unloading

Bart under a hopper

Bart under a bag splitter

Values are indicative and can vary depending on the function of the material and the distance.

### Dimensions



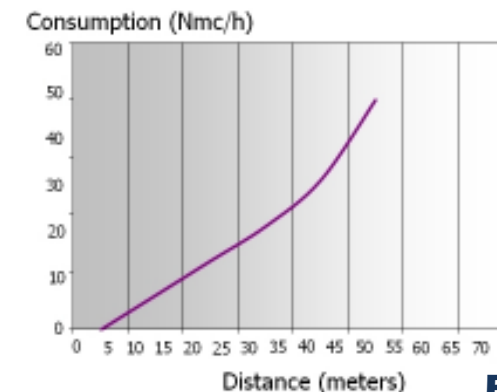
**Size:** 800x350x900

**Weight:** 50 kg

**Supply Voltage:** 230V50/60Hz

**Noise level:** < 70dBA

### Air consumption



**Available from:**  
**FILQUIP Pty Limited**

5/126 Compton Rd, Underwood,  
Qld 4119 Australia

Ph: +61 7 3208 3499 Fx: +61 7 3208 3449

Email: sales@filquip.com.au

www.filquip.com.au