

Diverter

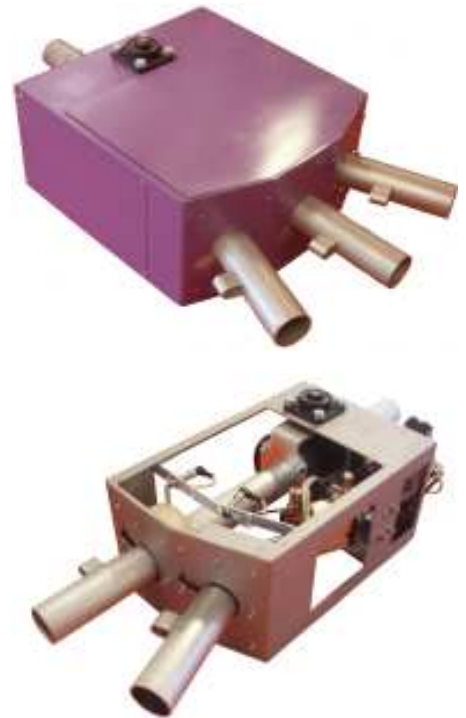
The diverter is placed along the pipeline to conduct the material into two or three different destinations. It not only ensures a smooth, regular and quiet transition of the material but also reduces power consumption.

The diverter's robust and resistant structure also allows for both indoor and outdoor assembly. It is suitable for handling materials of any size and can be used with abrasive or fragile materials as well as those that tend to clog.

The diverter has an oscillating tube mounted on two bearings, driven by a pneumatic piston which allows for fully automatic movements in any position. An inflatable seal placed on the head of the oscillating tube is discharged when the tube changes its position and inflates again after the pipe has reached the desired position which is controlled by limit switches.

The diverter is certified for pressure up to 6 bars. It is available in the 2 and 3 way versions and sizes from 2" to 6" with contact parts in carbon steel or AISI 304.

A special version for Bart vessels with an exclusive size of 2", which is appropriate for an operation up to 2 bars, is also available.



Installation of the diverter



A 2 and a 3 way diverter seen from within.



Diverter installed along a pipeline.

Available from:

FILQUIP Pty Limited

5/126 Compton Rd
Underwood Qld 4119
Australia

Phone: +61 7 3208 3499

Fax: +61 7 3208 3449

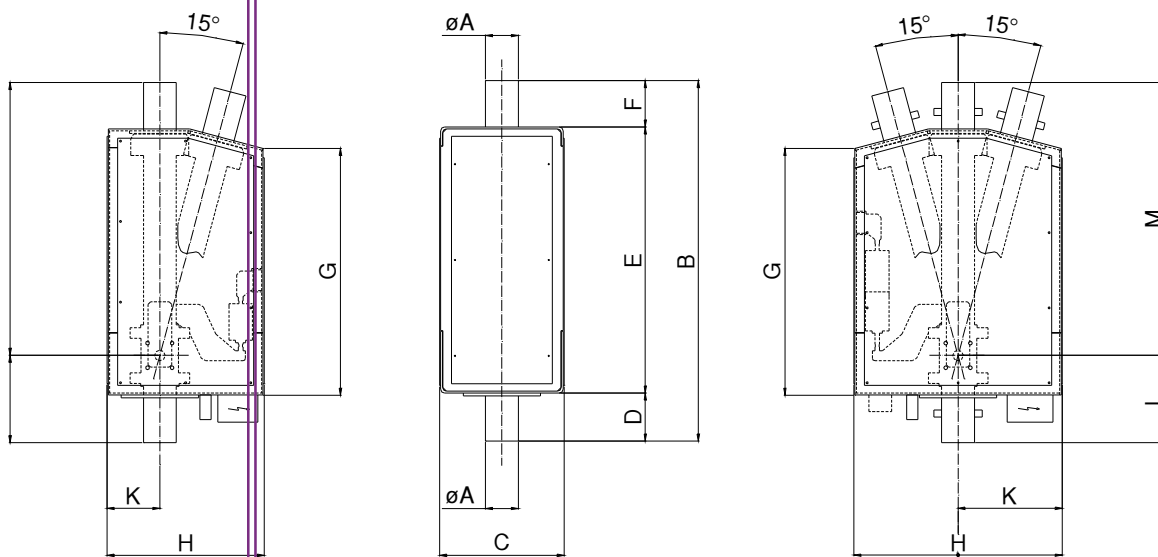
Email: sales@filquip.com.au

www.filquip.com.au

Diverter
code 500/01/11

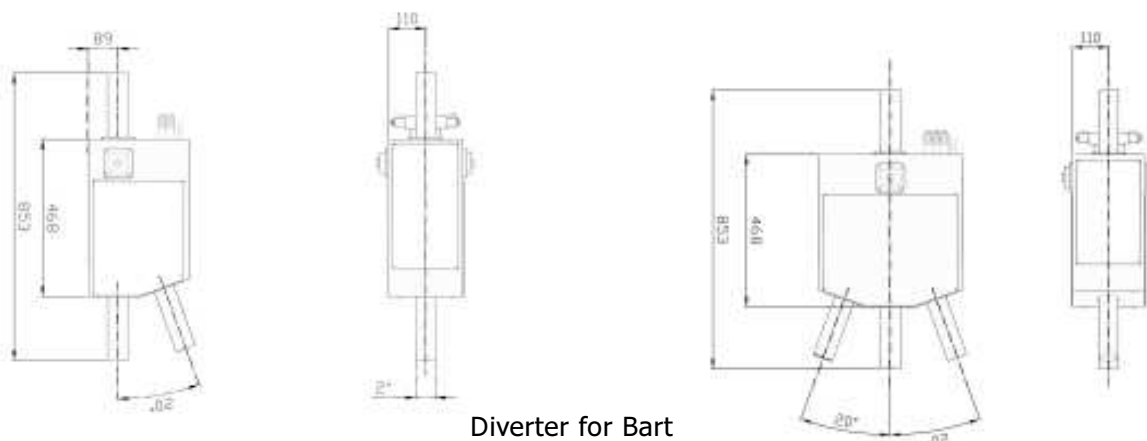
Diverter for Bart
code 206/01/11

Basic version



Type	Ways	A ø	B	C	D	E	F	G	H	K	L	M	Kg
DEV 122	2	2"	1373	404	191	1000	182	921	594	168	321	1052	210
DEV 132	2	3"	1373	404	191	1000	182	921	594	168	321	1052	220
DEV 142	2	4"	1373	404	191	1000	182	921	594	168	321	1052	230
DEV 252	2	5"	1532	532	204	1131	197	1048	670	220	372	1160	290
DEV 262	2	6"	1532	532	204	1131	197	1048	670	220	372	1160	310
DEV 123	3	2"	1373	404	191	1000	182	921	836	418	321	1052	250
DEV 133	3	3"	1373	404	191	1000	182	921	836	418	321	1052	260
DEV 143	3	4"	1373	404	191	1000	182	921	836	418	321	1052	270
DEV 253	3	5"	1532	532	204	1131	197	1048	890	445	372	1160	340
DEV 263	3	6"	1532	532	204	1131	197	1048	890	445	372	1160	360

Variations



Air-Tec system s.r.l.
 via del Cerchio 3/2, 40012 Calderara di Reno, Bologna - Italy
 Tel. +39 051 725128 Fax +39 051 725146
www.air-tec.it airtec@air-tec.it

Available from:
 Filquip Pty Ltd
 5/126 Compton Rd, Underwood, Qld 4119
 Ph: +61 7 32-8 3499 Fx: +61 7 3208 3449
 Email: sales@filquip.com.au