

Available from:
FILQUIP Pty Limited

5/126 Compton Rd, Underwood,
Qld 4119 Australia
Ph: +61 7 3208 3499 Fx: +61 7 3208 3449
Email: sales@filquip.com.au
www.filquip.com.au

Shaftless Spiral Conveyors

SSC



PROBLEM-FREE CONVEYING OF DIFFICULT MATERIALS

SSC Shaftless Screw or Spiral Conveyors are an alternative concept to traditional shafted screw conveyors. Material is conveyed by an extra heavy-duty shaftless screw that slides on a wear-resistant, low-friction liner inside the conveyor trough housing.

The longitudinally divided U-section troughs are manufactured from carbon or 304 L / 316 L stainless steel, including an appropriate surface treatment. Fabricated parts, except the ultra heavy-duty screw, are of the medium heavy-duty type. The cross section of the lower part of the trough is slightly wider than the side channels to allow for the liner to be inserted in the lower trough part. After complete assembly of the trough the liner is kept in place by the upper trough side channels. At one trough end there is a vertical or flush-type outlet. At the drive end the screw conveyor is equipped with an end plate holding the end bearing assembly with flanged shaft coupling to the spiral. The installed drive unit suits the application.

SSC can be loaded from above into the open trough (standard), or through an inlet spout included in a bolted trough cover (option).

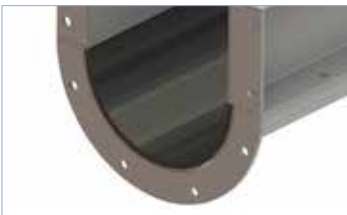
Technical Features

- Throughput rates: up to 45 m³/h (26.4 cfm) for sludge; up to 22 m³/h (12.9 cfm) for screenings
- Drive power: 0.55 kW (0.75 HP) ~ 9.2 kW (12.34 HP)
- Trough and spiral manufactured from carbon steel or 304L / 316L stainless steel
- Wide range of bottom trough liners

Trough and Liner Configuration



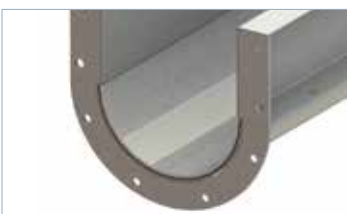
HDPE (Black)
Integral Trough



HDPE (Black)
TUS-type Trough
OPTION



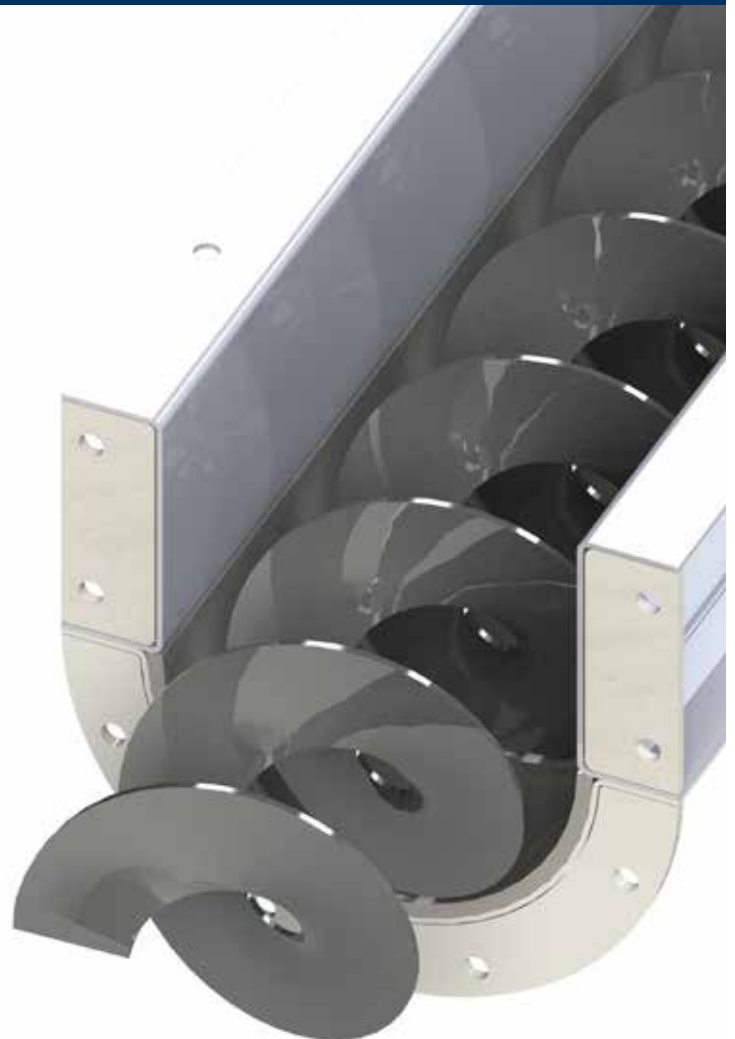
2 colours
Integral Trough
OPTION
N.B.: Replace liner when it changes
colour to green



2 colours
TUS-type Trough
OPTION
N.B.: Replace liner when it changes
colour to green



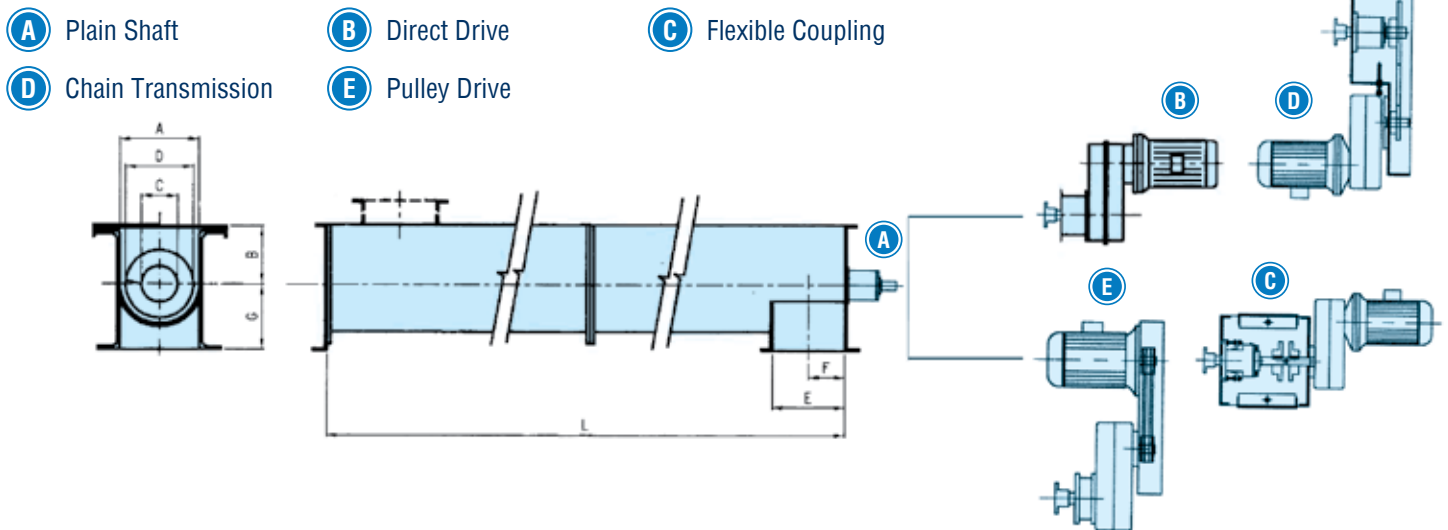
Wear plates
6-12 mm thick
OPTION



Benefits

- ✓ High efficiency conveying of difficult materials;
- ✓ Simple industrial design (few components);
- ✓ Low maintenance;
- ✓ Self-cleaning;
- ✓ Odour-free operation.

Overall Dimensions



Screw Ø	A	B	C	D	E	F	G	Q (m ³ / h) *	
								Screenings	Biological Sludge
150	175	115	48	127	258	129	145	0.6	1.9
200	225	135	60	177	334	167	185	1.1	4.5
250	275	160	76	227	396	198	215	2.3	9.5
300	325	195	101	277	474	237	245	3.8	12.6
350	375	235	114	327	560	280	255	6.3	16.8
400	425	270	168	377	632	316	305	7.4	18.6
500	525	340	219	477	774	387	380	14.2	37.1
600	625	420	323	577	922	461	465	22.1	45.0

L = Multiple of 250 mm

Throughput rates are valid for a max. installation angle of 5°. For angles from 5° to 30° throughput is reduced.

Options

- Bolted trough cover
- WAM® standard inlet spouts
- Inspection and overflow hatches
- Drainage kit
- Trough feet
- Washing nozzles
- Different type power transmissions: direct, coupling transmission, chain transmission, belt transmission
- Different liners available: with wear signalling, bottom bars or plates, white or black colour plastic
- Spiral guiding bar

Application



Available from:
FILQUIP Pty Limited

5/126 Compton Rd
Underwood Qld 4119
Australia

Phone: +61 7 3208 3499

Fax: +61 7 3208 3449

Email: sales@filquip.com.au

www.filquip.com.au



202001187 October 2015 Rights reserved to modify technical specifications.



www.wamgroup.com