

Waste Water Treatment

Sub-vertical Mechanical Fine Bar Screens GVF



Description ▼

GVF Sub-vertical Mechanical Fine Bar Screens consist of a robust steel frame and a bar filter varying according to the screening efficiency required.

GVF screens are used for medium-fine screening of both civil and industrial sewage.

Waste water flows into the upstream end of the unit where screenings are captured on the bars.

While the chain-driven rakes clean the bars, material is conveyed to the discharge point.

Solids are removed from the rakes by a wiper and discharged into a dumpster, conveyor or compactor.

Application ▼



Benefits ▼

- ✓ Rake tines precision laser-cut from continuous stainless steel bar;
- ✓ Upper and lower sprocket to maintain strict alignment required by fine bar spacing;
- ✓ Self-lubricating lower bronze bush enclosed in sealed casing ;
- ✓ Reduced service requirements (no need to take screen out of the channel).



www.savi-water.com
www.wamgroup.com

Waste Water Treatment

Sub-vertical Mechanical Fine Bar Screens GVF



Technical Features / Performance

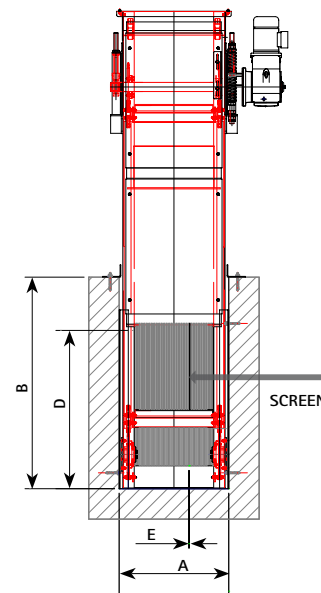
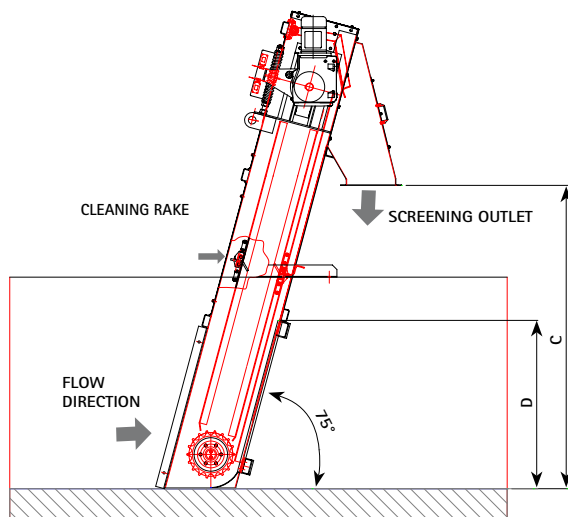
- ▶ 6 ~ 10mm spacing
- ▶ 4 or more cleaning rakes depending on screen height
- ▶ Channel width: 400 ~ 2,000 mm
- ▶ 75-degree incline angle
- ▶ Material: hot dip galvanised steel, 304 L / 316 L SS
- ▶ Incline angle other than 75 degrees up to 90 degrees with goose neck (option)
- ▶ Control panel (option)

GVF - SUB-VERTICAL MECHANICAL FINE BAR SCREEN - FLOW RATES

| MODEL FLOW RATE m³/h | 6 mm | 8 mm | 10 mm |
|---------------------------|-------|-------|-------|
| GVF 400 | 135 | 195 | 220 |
| GVF 600 | 265 | 380 | 430 |
| GVF 800 | 390 | 570 | 640 |
| GVF 1000 | 520 | 750 | 850 |
| GVF 1200 | 650 | 940 | 1,060 |
| GVF 1400 | 775 | 1,125 | 1,270 |
| GVF 1500 | 840 | 1,215 | 1,380 |
| GVF 2000 | 1,160 | 1,680 | 1,900 |

- Fixed parameters: screening zone height: 1 m
- Screen slope: 75°
- Head loss: 300 mm
- Values related to municipal waste water, screen partially occluded (30%)

Overall Dimensions



GVF - SUB-VERTICAL MECHANICAL FINE BAR SCREEN

| MODEL (*) | CHANNEL WIDTH A mm | CHANNEL HEIGHT B m | DISCHARGE HEIGHT FROM CHANNEL BOTTOM C mm | STANDARD SCREENING ZONE HEIGHT D mm (**) | OPENING SIZES mm (*) | INSTALLED POWER kW |
|-----------|-----------------------|-----------------------|---|--|-------------------------|--------------------------|
| GVF 400 | 400 | 1 ÷ 10 | customer's requirement | 1,000 | 6 - 8 - 10 | 0.75 |
| GVF 600 | 600 | 1 ÷ 10 | customer's requirement | 1,000 | 6 - 8 - 10 | 0.75 |
| GVF 800 | 800 | 1 ÷ 10 | customer's requirement | 1,000 | 6 - 8 - 10 | 0.75 |
| GVF 1000 | 1,000 | 1 ÷ 10 | customer's requirement | 1,000 | 6 - 8 - 10 | 1.1 |
| GVF 1200 | 1,200 | 1 ÷ 10 | customer's requirement | 1,000 | 6 - 8 - 10 | 1.1 |
| GVF 1400 | 1,400 | 1 ÷ 10 | customer's requirement | 1,000 | 6 - 8 - 10 | 1.1 |
| GVF 1500 | 1,600 | 1 ÷ 10 | customer's requirement | 1,000 | 6 - 8 - 10 | 1.5 |
| GVF 2000 | 2,000 | 1 ÷ 10 | customer's requirement | 1,000 | 6 - 8 - 10 | 1.5 |

(*) these are standard models; intermediate values are available

(**) standard height of the screening zone: 1,00 m, different heights available

SAVI



Available from:
FILQUIP Pty Limited

5/126 Compton Rd, Underwood,
Qld 4119 Australia
Ph: +61 7 3208 3499 Fx: +61 7 3208 3449
Email: sales@filquip.com.au
www.filquip.com.au