

Waste Water Treatment

Sub-vertical Mechanical Perforated Screens GVS



Description ▼

GVS Sub-vertical Mechanical Perforated Screens consist of a robust steel frame and a perforated plate filter varying according to the screening efficiency required.

GVS screens, which are equipped with brushes and wiper blades, are suitable for fine screening of sewage in both municipal and industrial plants, as well as, in particular, for process water of industrial processing plants.

Waste water flows into the upstream end of the unit where screenings are captured on a perforated plate filter.

Chain-driven brushes and wiper blades clean the perforated plate filter conveying at the same time solids to the discharge point. Material is removed from the rakes by a wiper and discharged into a dumpster, conveyor or compactor.

Application ▼



Benefits ▼

- ✓ Wipers, blades and brushes bolted on the rake mechanism;
- ✓ Easy replacement design;
- ✓ Recessed guide channels for drive chains;
- ✓ Lower chain guide with no moving parts;
- ✓ No lower sprocket, no bearings;
- ✓ Reduced service requirements (no need to remove screen from channel).



www.savi-water.com
www.wamgroup.com

Waste Water Treatment

Sub-vertical Mechanical Perforated Screens GVS



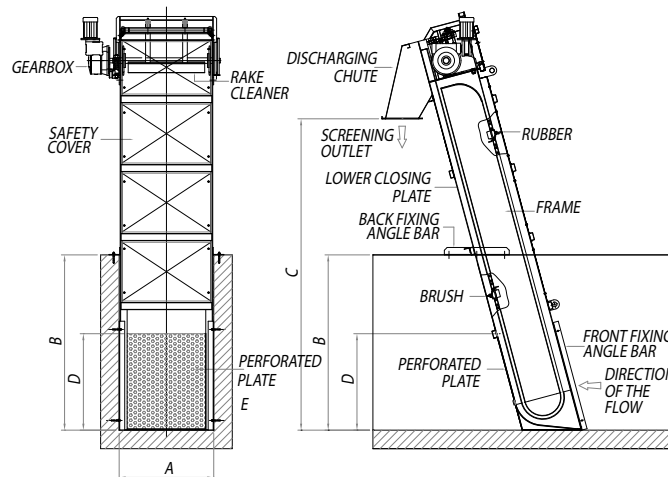
Technical Features / Performance

GVF - SUB-VERTICAL MECHANICAL PERFORATED SCREENS - FLOW RATES		
MODEL FLOW RATE m ³ /h	6 mm	8 mm
GVS 400	20	40
GVS 500	40	70
GVS 600	50	90
GVS 800	70	140
GVS 1000	100	180
GVS 1100	110	210
GVS 1200	130	230
GVS 1300	140	250
GVS 1400	150	280
GVS 1500	170	300
GVS 1750	200	360
GVS 2000	230	420

- ▶ 3mm ~ 6mm perforation
- ▶ 4 or more cleaning blades and wipers depending on screen height
- ▶ Channel width: 400 ~ 2,000 mm
- ▶ 75-degree incline angle
- ▶ Material: hot dip galvanised steel, 304 L / 316 L SS
- ▶ Incline angle other than 75 degrees up to 90 degrees with goose neck (optional)
- ▶ Control panel (optional)

- Fixed parameters: screening zone height: 1 m
- Screen slope: 75°
- Head loss: 300 mm
- Values related to municipal waste water, screen partially occluded (30%)

Overall Dimensions



GVF - SUB-VERTICAL MECHANICAL PERFORATED SCREENS						
MODEL (*)	CHANNEL WIDTH A mm	CHANNEL HEIGHT B m	DISCHARGE HEIGHT FROM CHANNEL BOTTOM C mm	STANDARD SCREENING ZONE HEIGHT D mm (**)	OPENING SIZES mm (*)	INSTALLED POWER kW
GVS 400	400	1 ÷ 10	customer's requirement	1,000	3 - 6	0.75
GVS 500	500	1 ÷ 10	customer's requirement	1,000	3 - 6	0.75
GVS 600	600	1 ÷ 10	customer's requirement	1,000	3 - 6	0.75
GVS 800	800	1 ÷ 10	customer's requirement	1,000	3 - 6	0.75
GVS 1000	1,000	1 ÷ 10	customer's requirement	1,000	3 - 6	1.1
GVS 1100	1,100	1 ÷ 10	customer's requirement	1,000	3 - 6	1.1
GVS 1200	1,200	1 ÷ 10	customer's requirement	1,000	3 - 6	1.1
GVS 1300	1,300	1 ÷ 10	customer's requirement	1,000	3 - 6	1.1
GVS 1400	1,400	1 ÷ 10	customer's requirement	1,000	3 - 6	1.1
GVS 1500	1,500	1 ÷ 10	customer's requirement	1,000	3 - 6	1.1
GVS 1750	1,750	1 ÷ 10	customer's requirement	1,000	3 - 6	1.5
GVS 2000	2,000	1 ÷ 10	customer's requirement	1,000	3 - 6	1.5

(*) these are standard models; intermediate values are available

(**) standard height of the screening zone: 1,00 m, different heights available



Available from:
FILQUIP Pty Limited

5/126 Compton Rd, Underwood,
QLD 4119 Australia
Ph: +61 7 3208 3499 Fx: +61 7 3208 3449
Email: sales@filquip.com.au
www.filquip.com.au