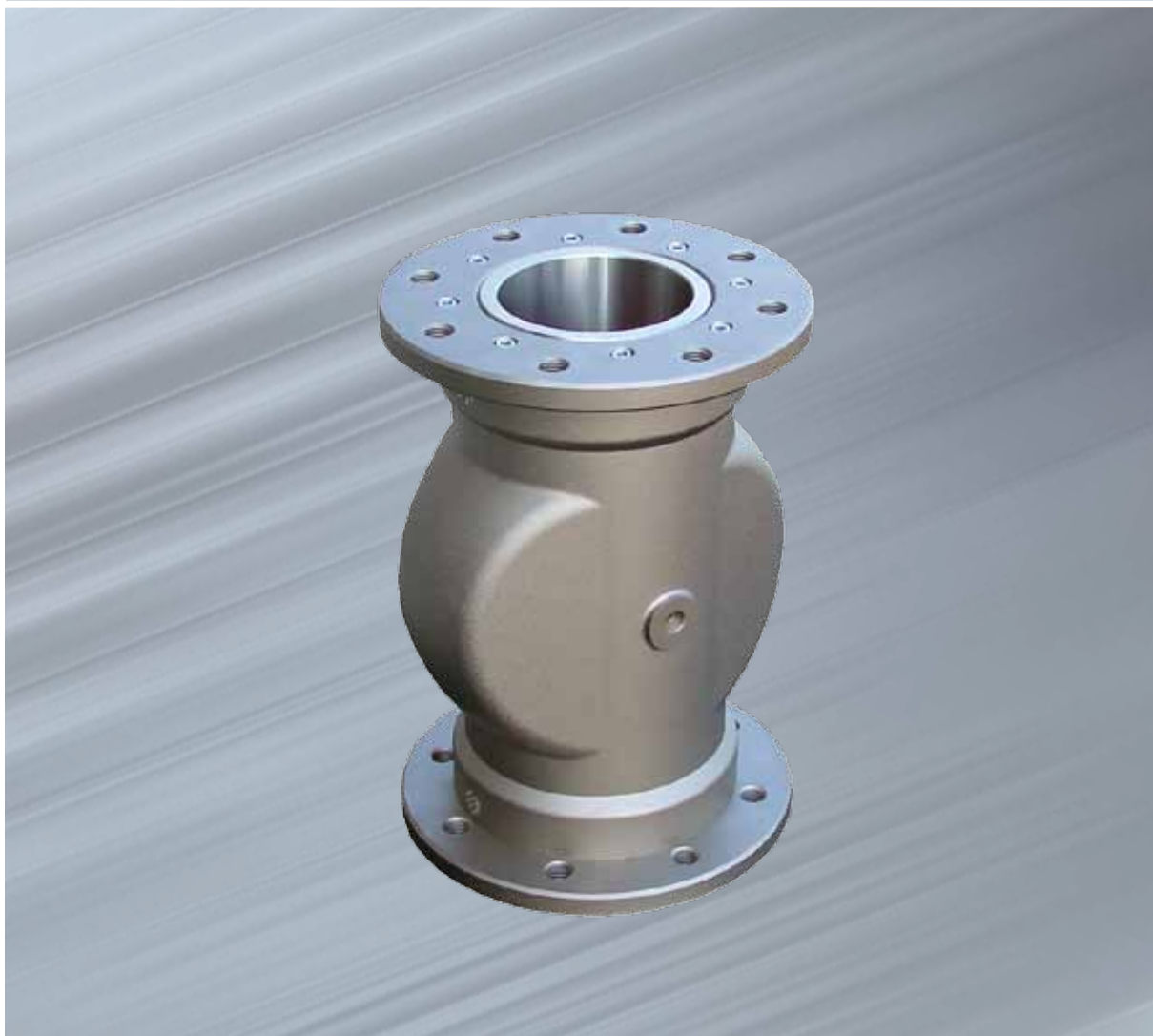


Pinch Valve VM



Available from:

FILQUIP Pty Limited

5/126 Compton Rd, Underwood,

Qld 4119 Australia

Ph: +61 7 3208 3499 Fx: +61 7 3208 3449

Email: sales@filquip.com.au

www.filquip.com.au

BEST SHUT-OFF VALVE IN PNEUMATIC CONVEYING SYSTEM FOR POWDERS, GRANULAR OR SLURRIES, IMPROVES PROCESS EFFICIENCY WITH QUICK AND EASY MAINTENANCE, NO TURBULENCES AND PRESSURE LOSSES THANKS TO THE FULL BORE SLEEVES INTEGRATING THE VALVE TO THE PIPELINE.

By introducing compressed air through the threaded bore into the interior of the valve, the internal flexible sleeve is reshaped in such a way that the passage is hermetically sealed.

VM Pinch Valves equally handle pneumatically conveyed powders, granules, fibres, dense mixtures or liquids.

Features

Passage Diameter: 13 mm (1/2") – 20 mm (3/4") – 25 mm (1") – 32 mm (1 ¼") – 40 mm (1 ½") – 50 mm (2") – 65 mm (2 ½") – 80 mm (3") – 100 mm (4") – 125 mm (5") – 150 mm (6") – 200 mm (8")

- Working Temperature: from -10 °C up to 80°C
- Pi Internal Max. Pneumatic Conveying System Pressure: 3.5 bar
- Pc Closure control Pressure: Pi + 2.5 bar (Max. 6 bar)

Accessories

CONTROL PANEL VMX

It has been designed for operating the VM Pinch Valves, and allows to:

- Open / Close air supply to the "VM" by the solenoid valve
- Adjust the closing pressure to "VM"
- Get information on the pressure line to "VM" by means of a 2.5 bar preset pressure switch

CONTROL PANEL VMX01N



Standard version

CONTROL PANEL VMX01NX



ATEX certified Ex II 3D T135°C
Ambient Temperature : -5°C / + 40°C

Benefits

- ✓ **Compact overall dimensions;**
- ✓ **Easy and quick sleeve and bush replacement;**
- ✓ **Full bore-through passage without any pressure loss;**
- ✓ **No product contact with the body;**
- ✓ **Sleeves in fabric-reinforced material;**
- ✓ **Sleeve support bushes either in aluminium alloy, hardened carbon steel or 304 stainless steel;**
- ✓ **Apart from periodic replacement of the sleeve and the bushes, no maintenance required;**
- ✓ **Lightweight in comparison with other makes and other types of valve;**
- ✓ **Particularly low air consumption;**
- ✓ **Food Grade contact parts.**

Benefits

1 Body



Made from aluminium casting

2 Sleeve



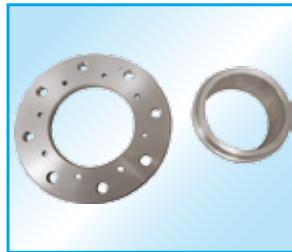
NR Natural Rubber anti-abrasion



NBR Natural Rubber food grade

3 Connection Processes

FLANGE AND BUSHES - Available for passage diameter from 40 mm up to 200 mm



FLANGE: - Aluminium
BUSHES: - Aluminium
- Hardened Steel
- 304 Stainless Steel

THREADED BUSHES - Available for passage diameter from 13 mm up to 100 mm

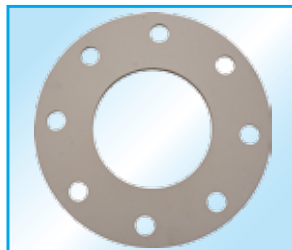


Threaded Bushes:
Diameters from 13 mm up to 32 mm
- Plastic
Diameters from 40 mm to 100 mm
- Aluminium
- Nickel Coated
- 304 Stainless Steel

4 Gaskets - Available for flanged version only



Black Colour



Food Grade White Colour



Applications



VM Pinch Valves are used for material flow interception in pneumatic conveying systems, or other pipelines. In addition, they can be installed as a locking device for silo filling pipes. In the open position the internal cross section of the valve is identical with the connecting pipe diameter.



063002349 January 2013 Rights reserved to modify technical specifications.



Available from:
FILQUIP Pty Limited

5/126 Compton Rd
Underwood Qld 4119
Australia
Phone: +61 7 3208 3499
Fax: +61 7 3208 3449
Email: sales@filquip.com.au
www.filquip.com.au



www.wamgroup.com