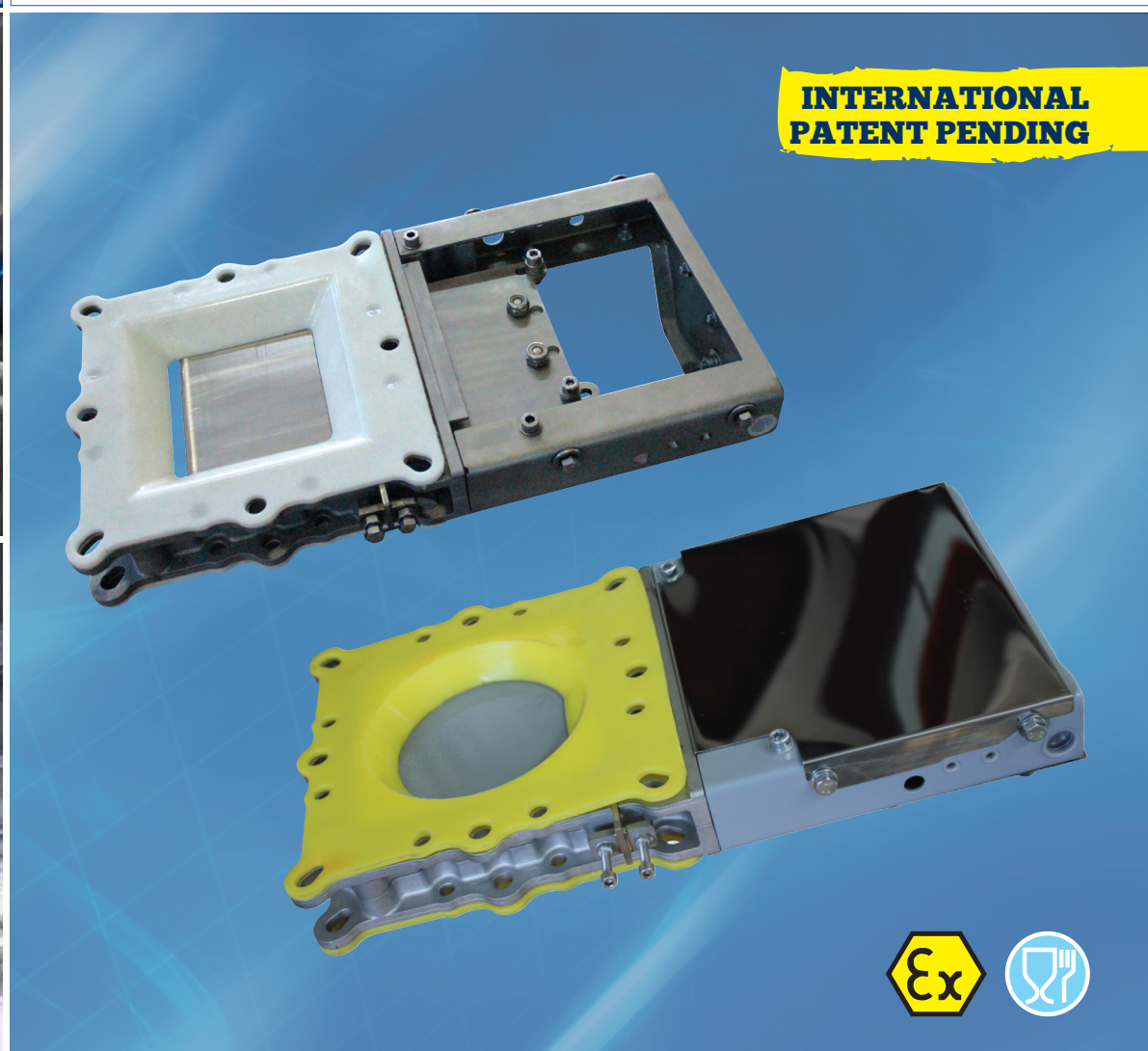


Low Profile Slide Valves VIB - VIBX



LOW PROFILE SLIDE VALVES: MAXIMUM EFFICIENCY, MINIMISED RESIDUE, HIGHLY ABRASION-RESISTANT

Low Profile VIB Slide Valves consist of two high pressure die-cast semi-bodies manufactured from aluminium alloy, a sliding blade in carbon or stainless steel, a carbon or stainless steel frame and a pre-stressed elastomeric seal manufactured from WAM®'s unique SINT™ engineering polymer composite.

The use of SINT™ engineering polymer composites considerably increases resistance to abrasion as compared to traditional valves. The valves are equipped with live-loaded seals which ensure extended durability and wear resistance, providing excellent sealing across the entire valve surface. Additional flange gaskets are not required. Low Profile VIB Slide Valves are available in a variety of configurations: the VIBQ version comes with a square inlet; the VIBC-type has a circular open cross section.

For the food industry a version with stainless steel blade and frame, as well as food-grade seal is available. The VIB is a gravity Slide Valve for all kinds of powdery or granular materials stored in silos or bins.

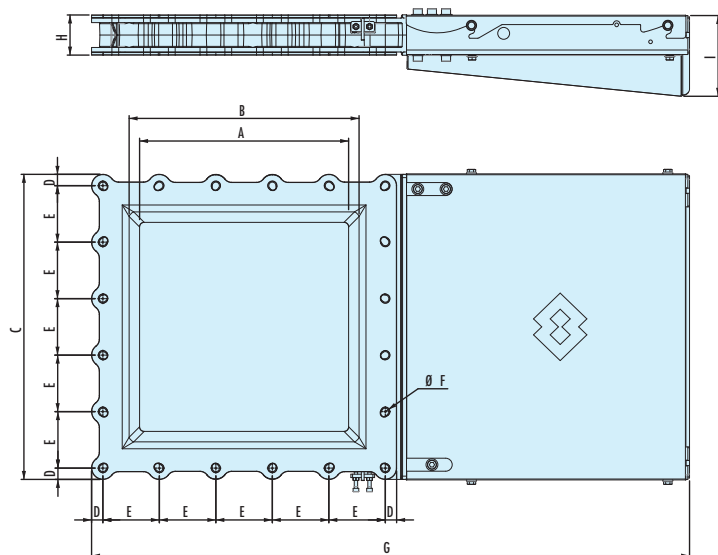
Technical Features

- PATENTED dust-proof, friction-free design;
- Compact: small number of components, minimum overall height;
- Compatible with WAM® and CEMA flanges;
- Wear compensating seal system;
- SINT™ engineering polymer for standard and food-grade applications;
- Replaceable sealing system in SINT™ engineering polymer;
- ATEX and FOOD certifications.

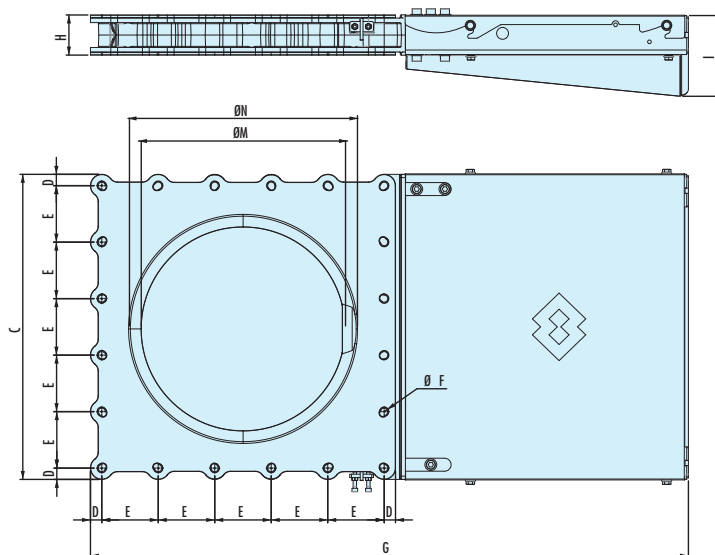
Overall Dimensions

WAMGROUP®
Standard Flange

VIBQ







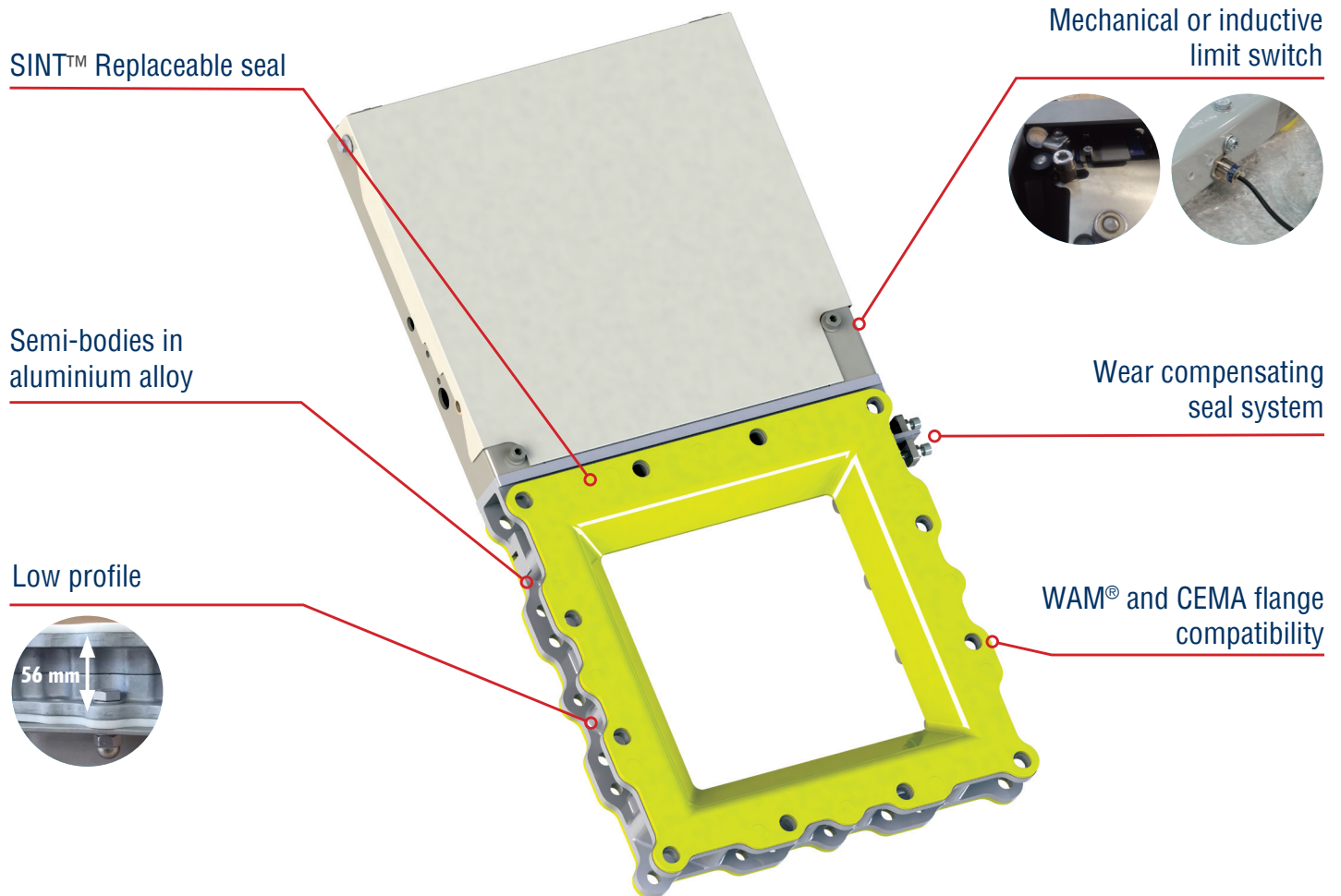
VIBC



VIB	A	B	ØM	ØN	C	D	E	N° E	ØF	BOLTS	G	H	I	Kg
150 (6")	120	175	130	162	261	15.5	115	2	12.5	M10	510	61	125	10
200 (8")	170	225	180	213	311	15.5	93.3	3	12.5	M10	610	61	122	14
250 (10")	220	275	230	267	361	15.5	110	3	12.5	M10	710	61	122	17
300 (12")	270	325	280	317	438	26.5	128.3	3	12.5	M10	840	61	122	24
350 (14")	320	375	330	377	489	22	89	5	12.5	M10	961	71	145	34
400 (16")	370	425	380	427	531	20	100	5	12.5	M10	1,058	71	145	41

Benefits

-  **Highly abrasion-resistant due to new replaceable SINT™ seal**
-  **Quick fitting thanks to WAM® and CEMA flange compatibility**
-  **No downtime for seal adjustment**
-  **Easy integration into the process thanks to light weight and eased handling**



Application



Animal Feed Milling



Detergents Processing



Food Processing



Chemicals Processing



DryMix Building Materials Processing



Ceramics Processing



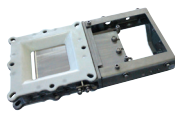
Glass Processing



Plastics Processing

Actuators

PNEUMATIC ACTUATOR COUPLING



+ KCPA +



+

V5V
BOB
Limit Switch

Valve Size	Actuator Code
150 - 200	CPL063 (CPL080)
250 - 300	CPL080
350-400	CPL100

Actuator choice depends on application and type of material.
Cylinder according ISO15552 (ex 6431) e VDMA 24562.

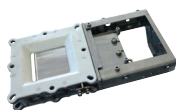
Accessories:

Cylinder	Connecting KIT
CPL063	KCPA0631530
CPL080	KCPA0801530
CPL080	KCPA0803540
CPL100	KCPA1003540

Solenoid Valve	
Actuator Code	Solenoid Valve Code
CPL063 - CPL080	V5V80 - V5VV80
CPL100	V5V40 - V5VV40
COIL 24/48/110/220V AC-DC	

Limit Switch Code
KXS18 - inductive
LSM8 - mechanical
KXM00 -reed

MANUAL HAND WHEEL COUPLING



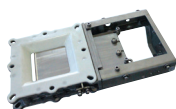
+



Valve Size	Lever Code
150 - 400	CMGA0xxxI

* Signalling system not obligatory.

GEAR MOTOR ACTUATOR COUPLING



+



Valve Size	Actuator Code
150-400	CRGA010BxxxI

Accessories:

Limit Switch Code
KXS18 - INDUCTIVE
LSM8 - MECHANICAL

* Signalling system obligatory.



Available from:
FILQUIP Pty Limited

5/126 Compton Rd
Underwood Qld 4119
Australia

Phone: +61 7 3208 3499

Fax: +61 7 3208 3449

Email: sales@filquip.com.au

www.filquip.com.au



UNI EN ISO 9001
Certified Company

www.wamgroup.com