

Available from:
FILQUIP Pty Limited
 5/126 Compton Rd, Underwood,
 Qld 4119 Australia
 Ph: +61 7 3208 3499 Fx: +61 7 3208 3449
 Email: sales@filquip.com.au
 www.filquip.com.au

Compact Sand Washer GRITSEP® LCS



HIGH PERFORMANCE GRIT WASHER

GRITSEP® LCS is a Sand Washer with high performances obtained thanks to SINT™ engineering polymer components with excellent anti-wear features.

The machine consists of a washing chamber with a vertical extracting screw.

The washing chamber is equipped with mixing tools and an air-water injection system. The state of the material can be monitored through a porthole.

The compact design of the GRITSEP® LCS makes it suitable for a number of applications.

Technical Features

- Mixing tools and extraction screw conveyor manufactured from SINT™ engineering polymer
- Washing chamber lined with SINT™ engineering polymer
- Integrated touch screen control panel
- Inspection porthole
- Solid throughput: from 0.10 m³/h up to 0.40 m³/h



SINT™ Engineering Polymer
Mixing Tool



Washing Chamber with Anti-
abrasion SINT™ Engineering
Polymer Liner



Control Panel

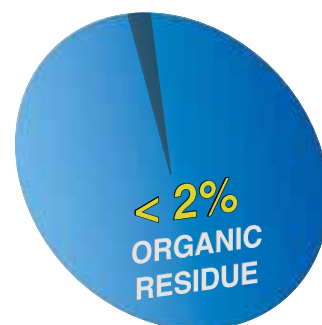


SINT™ Engineering Polymer
Screw Conveyor

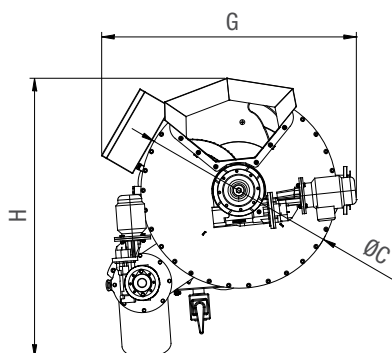
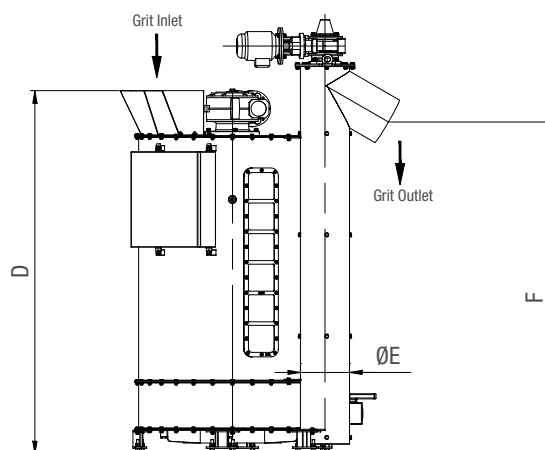
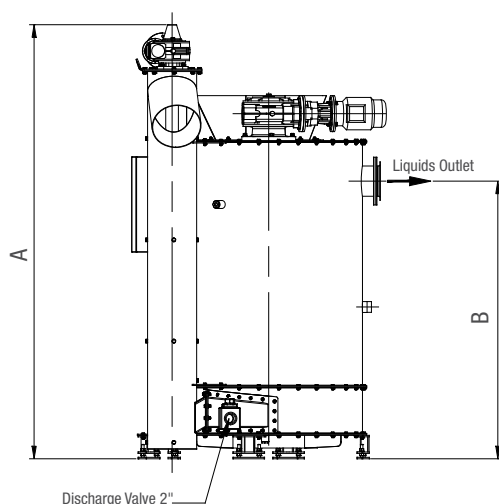
MODEL	Average Sand Extraction (m ³ /h)	Installed Power kW	Tank Capacity (lt)	Water Consumption at 3 BAR (lt/min)
LCS 100	0.1	0.55	370	12
LCS 400	0.4	1.10	1,110	30

Benefits

- ✓ High washing performance with organic residue < 2%
- ✓ Engineering polymer anti-wear components
- ✓ Plug and play
- ✓ Minimum footprint



Overall Dimensions



MODEL	A	B	C	D	E	F	G	H	Water outlet
LCS 100	1,970	1,224	653	1,532	168	1,520	1,130	990	DN100
LCS 400	2,413	1,544	1,088	2,019	273	1,844	1,419	1,522	DN150

For reference only; for detailed drawings contact the Manufacturer

Dimensions in mm

Application



Available from:
FILQUIP Pty Limited

5/126 Compton Rd
Underwood Qld 4119
Australia
Phone: +61 7 3208 3499
Fax: +61 7 3208 3449
Email: sales@filquip.com.au
www.filquip.com.au



203001220 October 2016 Rights reserved to modify technical specifications.



www.wamgroup.com