

Submersible Chopper Pump **WSP**



Description ▼

The WSP submersible pump consists of a waterproof cast iron body with internal electric motor and a special impeller. The drive unit enables the rotation of a chopper system with special shape impeller which collects and then chops the material by means of blades. These pumps, equipped with multi-channel impellers, open to free passage and double chopping suction.

Function ▼

The WSP submersible pump is designed for the feeding of a separator with fibrous material after they have been chopped by the blades of the chopper system.

These pumps are suitable for heavy-duty applications that require a prior shredding of solid or fibrous substances contained in the material to be pumped.



Application ▼

The WSP submersible pump available in various size find the most typical application in cow manure management due to high chopping performance that ensures better feeding of separators.

The WSP pumps find application also in AD plants (opened concrete tank), slurry plant management (pig and poultry) and in WWTP.

Benefits ▼

- ✓ High flow rate;
- ✓ Wide side range available;
- ✓ Sturdy design and wear-resistant coating;
- ✓ High separation performance;
- ✓ Quick installation;
- ✓ Vertical or horizontal installation;
- ✓ Easy maintenance;
- ✓ Reduced operating costs.



Available from:
FILQUIP Pty Limited

5/126 Compton Rd, Underwood,
Qld 4119 Australia

Ph: +61 7 3208 3499 Fx: +61 7 3208 3449

Email: sales@filquip.com.au

www.filquip.com.au

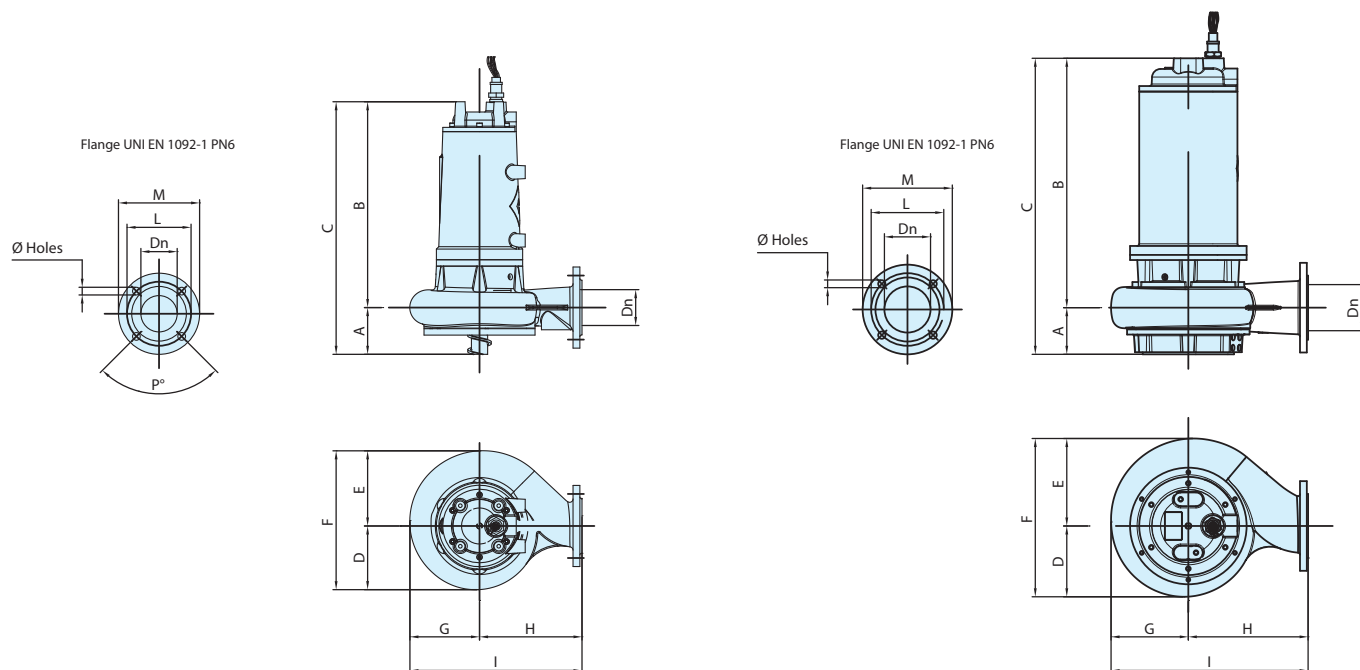
Submersible Chopper Pump WSP



Technical Features / Performance ▼

- ▶ Throughput rate: 90 l/s - 324 m³/h max
- ▶ Head: 21.5m max
- ▶ Drive unit power rating: 2.2 kW – 7.5 kW
- ▶ Outlet size: DN80 - DN100

Overall Dimensions ▼



Type	OVERALL DIMENSIONS (mm)										Weight (kg)
	Dn	A	B	C	D	E	F	G	H	I	
WSP22	80	107	564	671	150	177	327	163	239	402	73
WSP30											75
WSP40											76
WSP55	100	108	659	767	155	190	345	173	263	436	121
WSP75											127



Available from:
FILQUIP Pty Limited

5/126 Compton Rd, Underwood,
QLD 4119 Australia

Ph: +61 7 3208 3499 Fx: +61 7 3208 3449

Email: sales@filquip.com.au

www.filquip.com.au