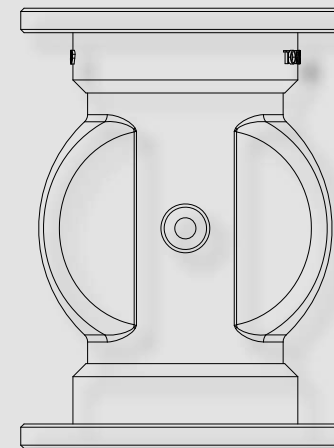
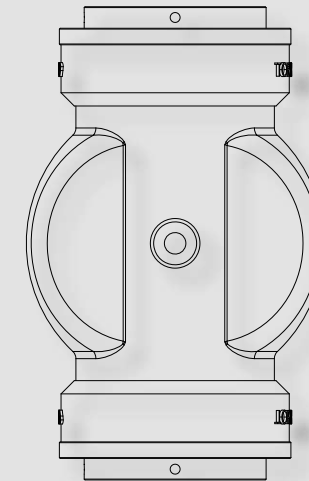


# VM PINCH VALVES

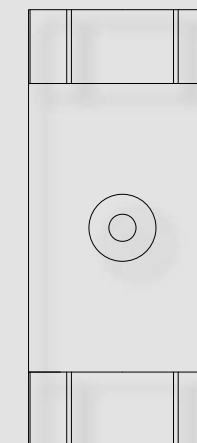
VM PINCH VALVES  
WITH FLANGES AND BUSHINGS



VM PINCH VALVES  
WITH THREADED BUSHINGS



VM PINCH VALVES  
WITH THREADED BUSHINGS FROM 13 TO 32 MM



Available from:  
**FILQUIP** PTY LIMITED

24 Smallwood Street  
Underwood, Qld 4119, Australia  
Ph: +61 7 3208 3499 [sales@filquip.com.au](mailto:sales@filquip.com.au)  
[www.filquip.com.au](http://www.filquip.com.au)

SECTORS OF APPLICATION



CONSTRUCTION



FOOD &  
ANIMAL FEED



PLASTICS &  
CHEMICALS



HEAVY  
INDUSTRY



RENEWABLE  
ENERGY



PLANTS  
& MACHINERY

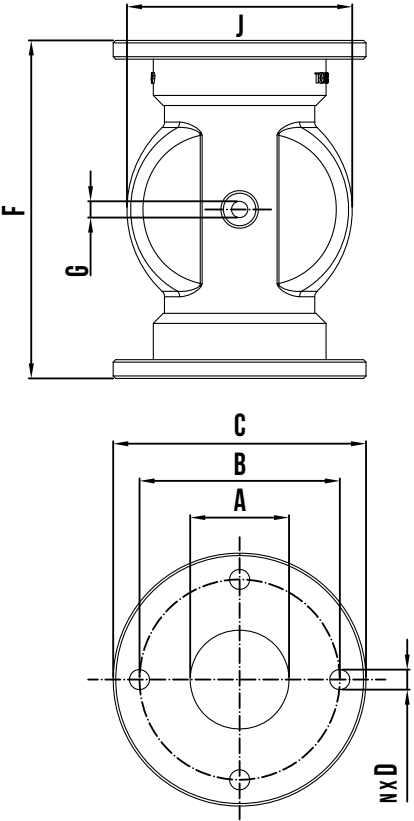


ENVIRONMENTAL  
TECHNOLOGIES

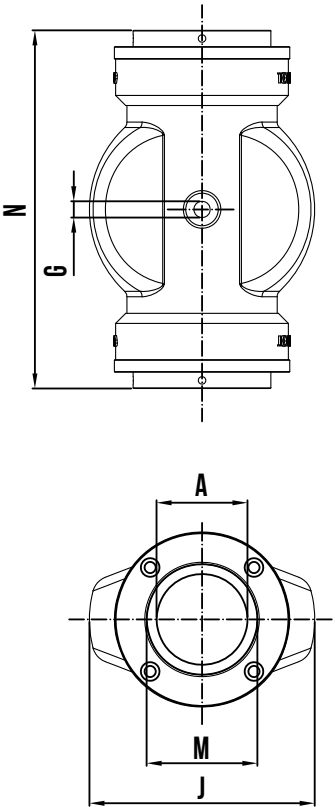
# VM PINCH VALVE

The **VM** pinch valve is used to intercept the flow of material in pneumatic conveying, as a closing system for silo loading pipes or in pipes with falling material passing through. In the open position, the internal section is identical to the diameter of the connected pipe, avoiding loss of pressure or turbulence as the product passes through. They are able to intercept products in powder, granules, fibres, dense mixtures and liquids.

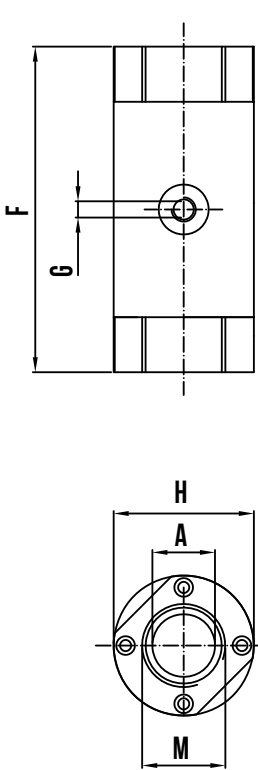
VM WITH FLANGES AND BUSHINGS  
FROM 40 MM TO 200 MM



VM WITH THREADED BUSHINGS  
FROM 40 MM TO 100 MM



VM WITH THREADED BUSHINGS  
FROM 13 MM TO 32 MM



VM PINCH VALVE (dimensions in mm)

Type	A	B	C	D	n	F	G	H	J	M
VM013	13					120	1/8"	42		1/2"
VM020	20					130	1/8"	50		3/4"
VM025	25					130	1/8"	56		1"
VM032	32					165	1/8"	70		1+1/4"
VM040	40	110	150	M 16	4	178	1/8"		99	1+1/2"
VM050	50	125	165	M 16	4	190	1/4"		114	2"
VM065	65	145	185	M 16	4	225	1/4"		138	2+1/2"
VM080	80	160	200	M 16	4	270	1/4"		180	3"
VM100	100	180	220	M 16	8	310	1/4"		214	4"
VM125	125	210	250	M 16	8	350	1/4"		250	
VM150	150	240	285	M 16	8	396	1/4"		285	
VM200	200	295	340	M 16	8	460	1/4"		374	

## TECHNICAL DATA

- Body and flanges in: Aluminium;
- Contact parts (bushings) in: Aluminium, AISI 304, AISI 316, hardened steel;
- Inner sleeve in anti-wear rubber or food-grade NBR;
- Working temperature: from -20°C to +80°C;
- Internal pressure (IP) of the pneumatic transport: max +3.5 bar;
- Closing pressure (CP): IP + 2.5 bar (max. 6 bar);
- Quick sleeve replacement without dedicated tools.

## ACCESSORIES



VMX01N standard version control panel



ATEX VMX01NX version control panel





CE

VM PINCH VALVE

CONFIGURATION

VM	100	A	A	0
	NOMINAL DIAM.	CONNECTION 1	CONNECTION 2	MAT. SLEEVE
				0 Natural rubber 1 Food-grade NBR
				A Aluminium flange and bushings B Aluminium flange and hardened bushings C Aluminium flange and AISI304 bushings D Aluminium flange and AISI316 bushings F Aluminium threaded bushing G Plastic threaded bushing H AISI304 threaded bushing I AISI316 threaded bushing L Hardened threaded bushings
				A Aluminium flange and bushings B Aluminium flange and hardened bushings C Aluminium flange and AISI304 bushings D Aluminium flange and AISI316 bushings G Plastic threaded bushing H AISI304 threaded bushing I AISI316 threaded bushing L Hardened threaded bushings
				013 13 mm 020 20 mm 025 25 mm 032 32 mm 040 40 mm 050 50 mm 065 65 mm 080 80 mm 100 100 mm 125 125 mm 150 150 mm 200 200 mm
				VM Pneumatic pinch valve

Available from:

**FILQUIP PTY LIMITED**

24 Smallwood Street  
Underwood, Qld 4119, Australia  
Ph: +61 7 3208 3499 sales@filquip.com.au  
www.filquip.com.au