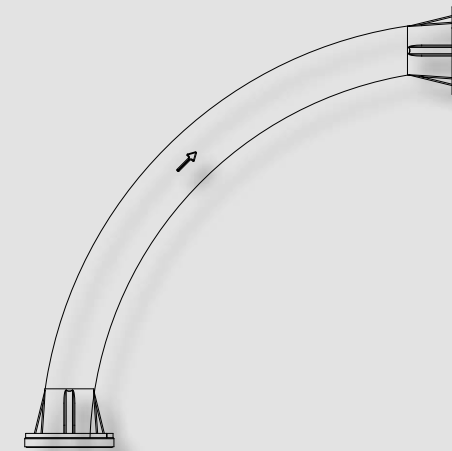
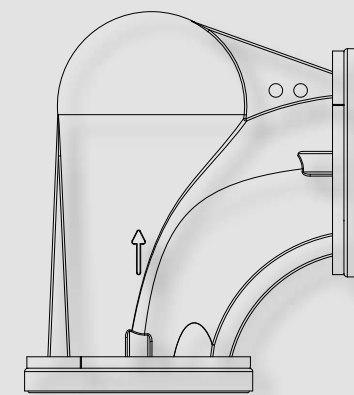


ELBOWS

EW EXTRABEND ANTI-ABRASION ELBOWS



EB EXTRABEND ANTI-ABRASION ELBOWS



Available from:

FILQUIP PTY LIMITED

24 Smallwood Street

Underwood, Qld 4119, Australia

Ph: +61 7 3208 3499 sales@filquip.com.au

www.filquip.com.au

SECTORS OF APPLICATION



CONSTRUCTION



FOOD &
ANIMAL FEED



PLASTICS &
CHEMICALS



HEAVY
INDUSTRY



RENEWABLE
ENERGY



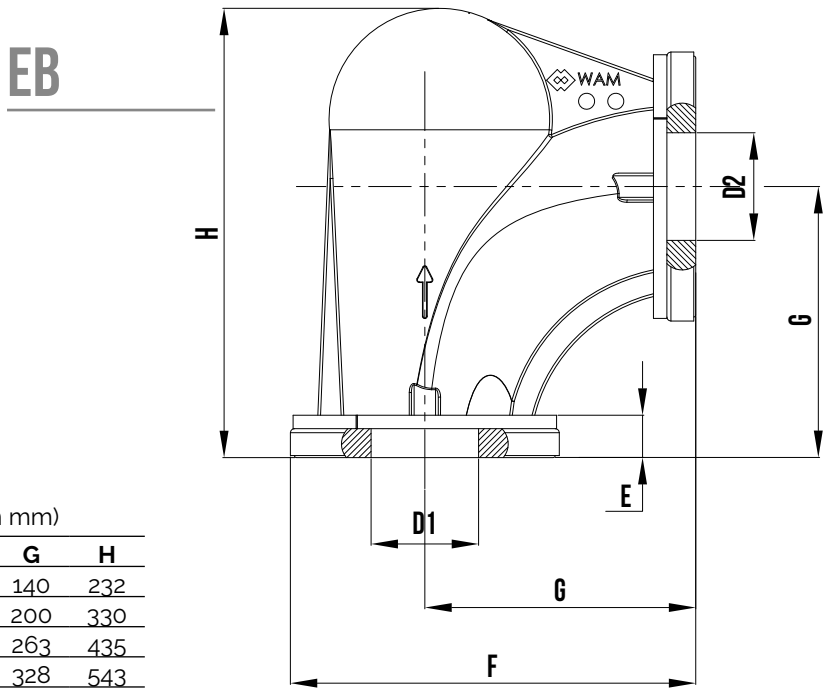
PLANTS
& MACHINERY



ENVIRONMENTAL
TECHNOLOGIES

EB EXTRABEND ANTI-ABRASION ELBOWS

The **EXTRABEND** short radius elbow is suitable for pneumatic conveying of abrasive materials in granules or powders. The special geometry allows the passage of material flow with minimum wear, while the SINTER technopolymer guarantees lightness and resistance to abrasion.

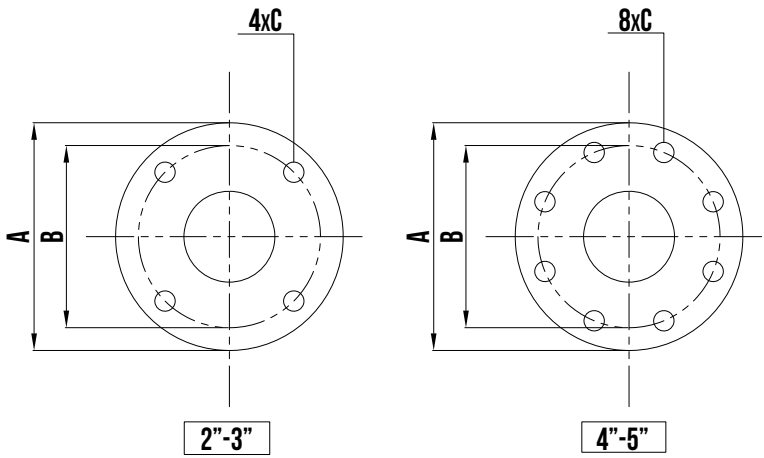


EB SHORT RADIUS ELBOW (dimensions in mm)

Type Ø	D1	D2	E	F	G	H
2"	55	52	23	220	140	232
3"	85	80	30	300	200	330
4"	108	105	30	373	263	435
5"	132	129	37	453	328	543

FLANGING DIMENSIONS (dimensions in mm)

Type Ø	A	B	C
2"	165	125	18
3"	200	160	18
4"	220	180	18
5"	250	210	18



TECHNICAL DATA

- Pn flanges;
- Transport pressure: from -0.5 to +1.5 bar;
- Operating temperatures: -20°C to +70°C.

COMPONENTS



2" - 3" half-flange



4" - 5" half-flange

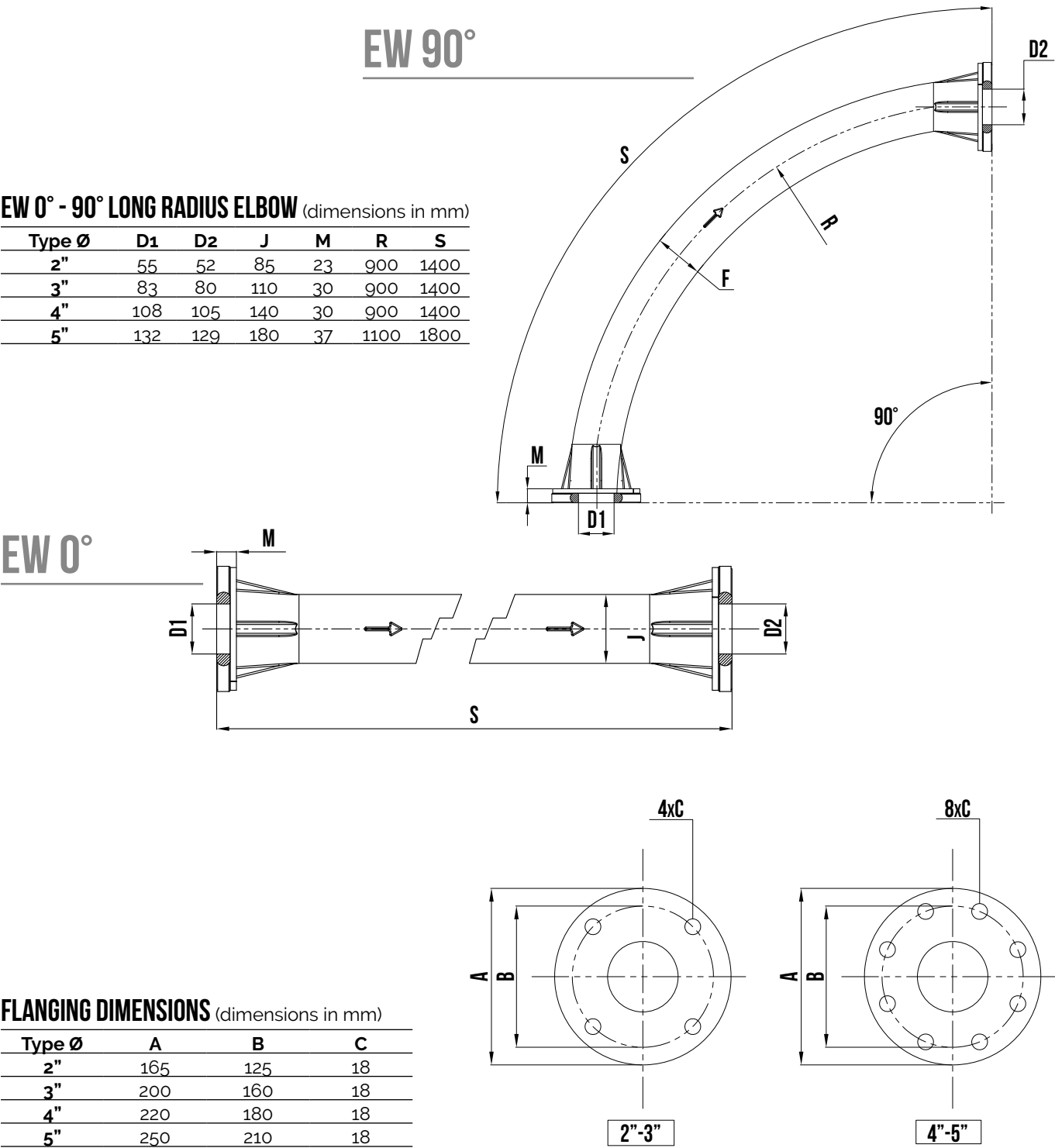
ACCESSORIES



Containment band

EW EXTRACURVE ANTI-ABRASION ELBOWS

The **EXTRACURVE** short radius elbow is suitable for pneumatic conveying of abrasive materials in granules or powders. The particular geometry allows the passage of material flow with minimum wear, while the SINTER technopolymer guarantees elasticity, lightness and resistance to abrasion.



TECHNICAL DATA

- Pn flanges;
- Transport pressure: from -0.5 to +1.5 bar;
- Operating temperatures: -20°C to +70°C.

COMPONENTS



2" - 3" half-flange



4" - 5" half-flange



Available from:
FILQUIP PTY LIMITED
 24 Smallwood Street
 Underwood, Qld 4119, Australia
 Ph: +61 7 3208 3499 sales@filquip.com.au
www.filquip.com.au